

Immersion Resistance thermometer

Sensor tube 10 x 1.5 mm, screw slidable

Measuring insert 1 x PT 100 / 2 x PT 100, changeable 8 mm Ø
 Transmitter installation possible (Sheet 18.10)

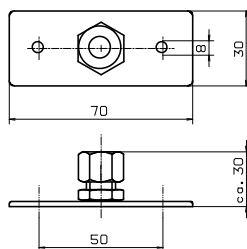
Connection head Form B of light alloy according to DIN 43729 with
 M 20 x 1.5 cable entry

Connection diagram See sheet 19.20

Operating temperature Up to 550° C

Response time
 (Average value)

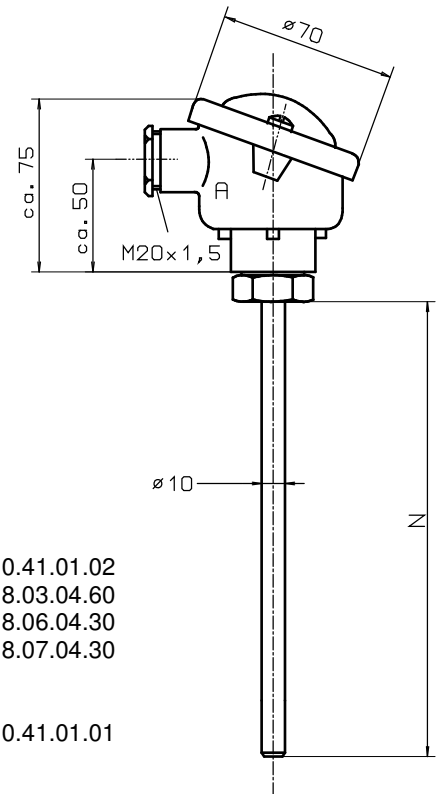
in Water 0,4 m/s : $t_{0,5} \approx 30$ s, $t_{0,9} \approx 90$ s
 in Air 1 m/s : $t_{0,5} \approx 2,5$ min, $t_{0,9} \approx 6,6$ min

Fixing


Fitting
 Material :

| | | |
|------------------|-------|------------|
| galvanized steel | R1/2" | 0.41.01.02 |
| 1.4541 | R1/2" | 8.03.04.60 |
| 1.4541 | R3/4" | 8.06.04.30 |
| 1.4541 | R1" | 8.07.04.30 |

Flange
 galvanized steel 0.41.01.01



Version Material 1.4541 (V2A) stainless steel X6 CrNiTi 1810

| Thermowell Material | N in mm | Weight in kg | Measuring-insert length | Order no. 1 x PT 100 | Order no. 1 x PT 100 | Delivery time |
|---------------------|-----------|--------------|-------------------------|----------------------|----------------------|---|
| 1.4541 | 180 | 0,4 | 210 | 4.13.04.11 | 4.13.04.12 | All models are available by arrangement |
| | 250 | 0,5 | 280 | 4.13.04.21 | 4.13.04.22 | |
| | 300 | 0,6 | 330 | 4.13.04.31 | 4.13.04.32 | |
| | 350 | 0,7 | 380 | 4.13.04.41 | 4.13.04.42 | |
| | 400 | 0,8 | 430 | 4.13.04.51 | 4.13.04.52 | |
| | 500 | 0,9 | 530 | 4.13.04.61 | 4.13.04.62 | |
| | 700 | 1,0 | 730 | 4.13.04.71 | 4.13.04.72 | |
| | 900 | 1,2 | 930 | 4.13.04.81 | 4.13.04.82 | |
| | Surcharge | | | 3- wire circuit | 4.13.00.03 | |
| Surcharge | | | 4- wire circuit | 4.13.00.04 | 4.13.00.24 | |

Version Material 1.4571 (V4A) stainless steel X6 CrNiMoTi 17222

| Thermowell Material | N in mm | Weight in kg | Measuring-insert length | Order no. 1 x PT 100 | Order no. 1 x PT 100 | Delivery time |
|---------------------|-----------|--------------|-------------------------|----------------------|----------------------|---|
| 1.4571 | 180 | 0,4 | 210 | 4.13.20.11 | 4.13.20.12 | All models are available by arrangement |
| | 250 | 0,5 | 280 | 4.13.20.21 | 4.13.20.22 | |
| | 300 | 0,6 | 330 | 4.13.20.31 | 4.13.20.32 | |
| | 350 | 0,7 | 380 | 4.13.20.41 | 4.13.20.42 | |
| | 400 | 0,8 | 430 | 4.13.20.51 | 4.13.20.52 | |
| | 500 | 0,9 | 530 | 4.13.20.61 | 4.13.20.62 | |
| | 700 | 1,0 | 730 | 4.13.20.71 | 4.13.20.72 | |
| | 900 | 1,2 | 930 | 4.13.20.81 | 4.13.20.82 | |
| | Surcharge | | | 3- wire circuit | 4.13.00.03 | |
| Surcharge | | | 4- wire circuit | 4.13.00.04 | 4.13.00.24 | |