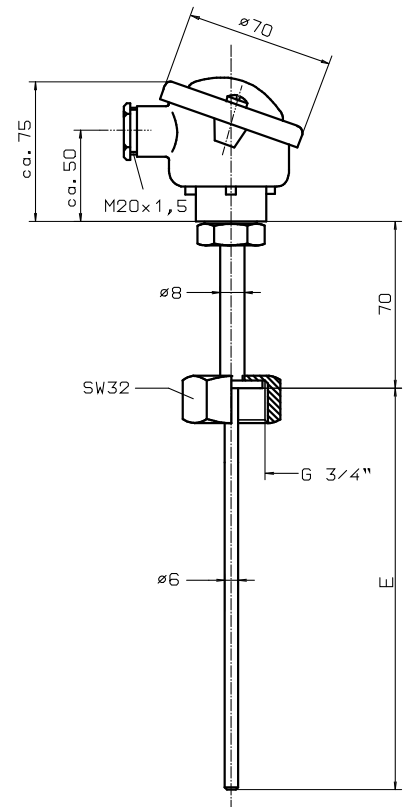


Screw-in resistance thermometer

with additional welded thermowell

Measuring insert	1 x PT 100 / 2 x PT 100, 2-wire circuit Transmitter installation possible (Sheet 18/10) installed measuring resistance determined
Connection head	Form B of light alloy according to DIN 43729 with M 20 x 1.5 cable gland
Connection diagram	See sheet 19.20
Operating temperature	Normal version to 400° C
Response time (Average value)	in water 0,4 m/s : $t_{0,5} \approx 20$ s, $t_{0,9} \approx 60$ s in air 1m/s : $t_{0,5} \approx 2,0$ min, $t_{0,9} \approx 6,0$ min



Version with R 3/4 " union nut

Thermowell Material	E in mm	Order no. 1 x PT 100	Order no. 2 x PT 100
1.4541 (Fühler)	100	4.17.04.31	4.17.04.32
	160	4.17.04.11	4.17.04.12
	200	4.17.04.21	4.17.04.22
	220	4.17.04.41	4.17.04.42
	250	4.17.04.51	4.17.04.52
	300	4.17.04.61	4.17.04.62
Surcharge 3-wire circuit		4.17.00.03	4.17.00.23
Surcharge 4-wire circuit		4.17.00.04	4.17.00.24

Welded jacket St. 35.8 M-No. 1.0305

Thermowell Material	E in mm	Order no.
1.0305 ST 35.8	100	4.17.01.30
	160	4.17.01.10
	200	4.17.01.20
	220	4.17.01.40

Welded jacket X6 CrNiTi 1810, M-No. 1.4541

Thermowell Material	E in mm	Order no.
1.4541	100	4.17.04.30
	160	4.17.04.10
	200	4.17.04.20
	220	4.17.04.40
	250	4.17.04.50
	300	4.17.04.60

