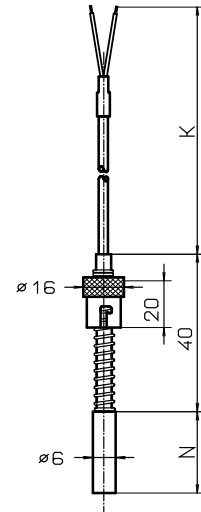


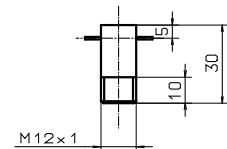
Plug-in resistance thermometer with Bayonet fitting

fixed insertion length

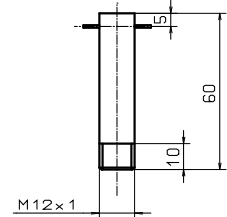
Measuring insert	1 x PT 100 (2 x PT 100 possible on request)
Operating temperature	Normal version up to 300 ° C
Thermowell	Stainless steel 6 mm Ø Mat. 1.4541
Operating temperature	PTFE cables up to 260 ° C constant temperature Glass fiber cables up to 400 ° C Other temperature ranges available on request
Connection	Teflon insulated single conductors, common glass fibre yarn
PTFE	cable filler, Teflon outer sheath, 1m long
Glass fibre yarn	Glass fibre yarn insulated single conductors, common glass fibre yarn cable filler



Version	PTFE (Teflon)		Glass fibre yarn		
	N in mm	Order no. 1 x PT 100 Tip flat	Order no. Tip 120°	Order no. 1 x PT 100 Tip flat	Order no. Tip 120°
	10	4.36.04.31	4.36.04.61	4.36.14.31	4.36.14.61
	50	4.36.04.11	4.36.04.31	4.36.14.11	4.36.14.31
	100	4.36.04.21	4.36.04.41	4.36.14.21	4.36.14.41
Addition	1 m cable length	4.36.04.00		4.36.14.00	
	50 mm N	4.36.04.01		4.36.14.01	
	3-wire circuit	4.36.00.03		4.36.10.03	
	4-wire circuit	4.36.00.04		4.36.10.04	

Screw-in bushings


Order no. 4.36.04.04



Order no. 4.36.04.02

Adjustable installation length

Measuring insert	1 x PT 100 / 2 x PT 100
Operating temperature	PTFE-cable to 260°C permanent temperature Other temperature ranges available on request
Thermowell	SWtainless steel 6mmØ , 8mmØ M-No. 1.4541
Connection	Teflon insulated single conductors, common glass fibre yarn
PTFE	cable filler, Teflon outer sheath, 1m long
Glass fibre yarn	Glass fibre yarn insulated single conductors, common glass fibre yarn cable filler

Version	Tip flat		Tip 120°	
	N in mm	Weight	1 x PT 100	2 x PT 100
Insertion length max. 270mm				
6 mm	5	0,1 kg	4.37.14.11	4.37.14.12
	10	0,2 kg	4.37.14.21	4.37.14.22
8 mm	5	0,1 kg	4.37.14.31	4.37.14.32
	10	0,2 kg	4.37.14.41	4.37.14.42
Additio	1 m cable length		4.37.04.00	4.37.04.02
	50mm N		4.37.04.01	4.37.04.03
	3-wire circuit		4.37.00.03	4.37.00.23
	4-wire circuit		4.37.00.04	4.37.00.24

Screw-in bushings different threads and versions, see sheet 15.2

